

**Option 3 – DRAFT 10-6-21**

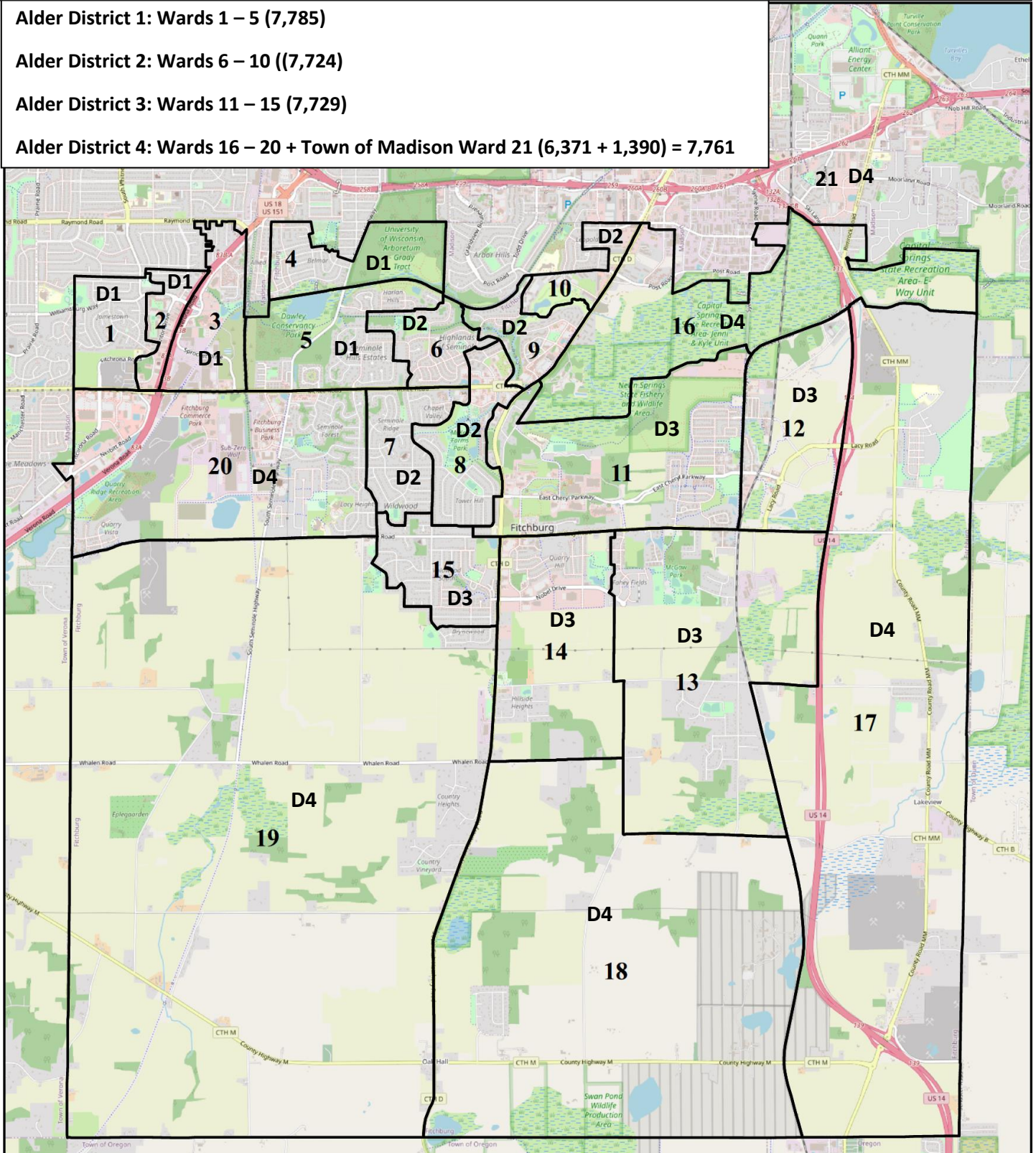
**City of Fitchburg Population: 29,609, Town of Madison Population to be annexed in 2022: 1,390  
Ideal Equal Population Distribution Per Alder District, to include Town of Madison Population = 7,750**

**Alder District 1: Wards 1 – 5 (7,785)**

**Alder District 2: Wards 6 – 10 ((7,724)**

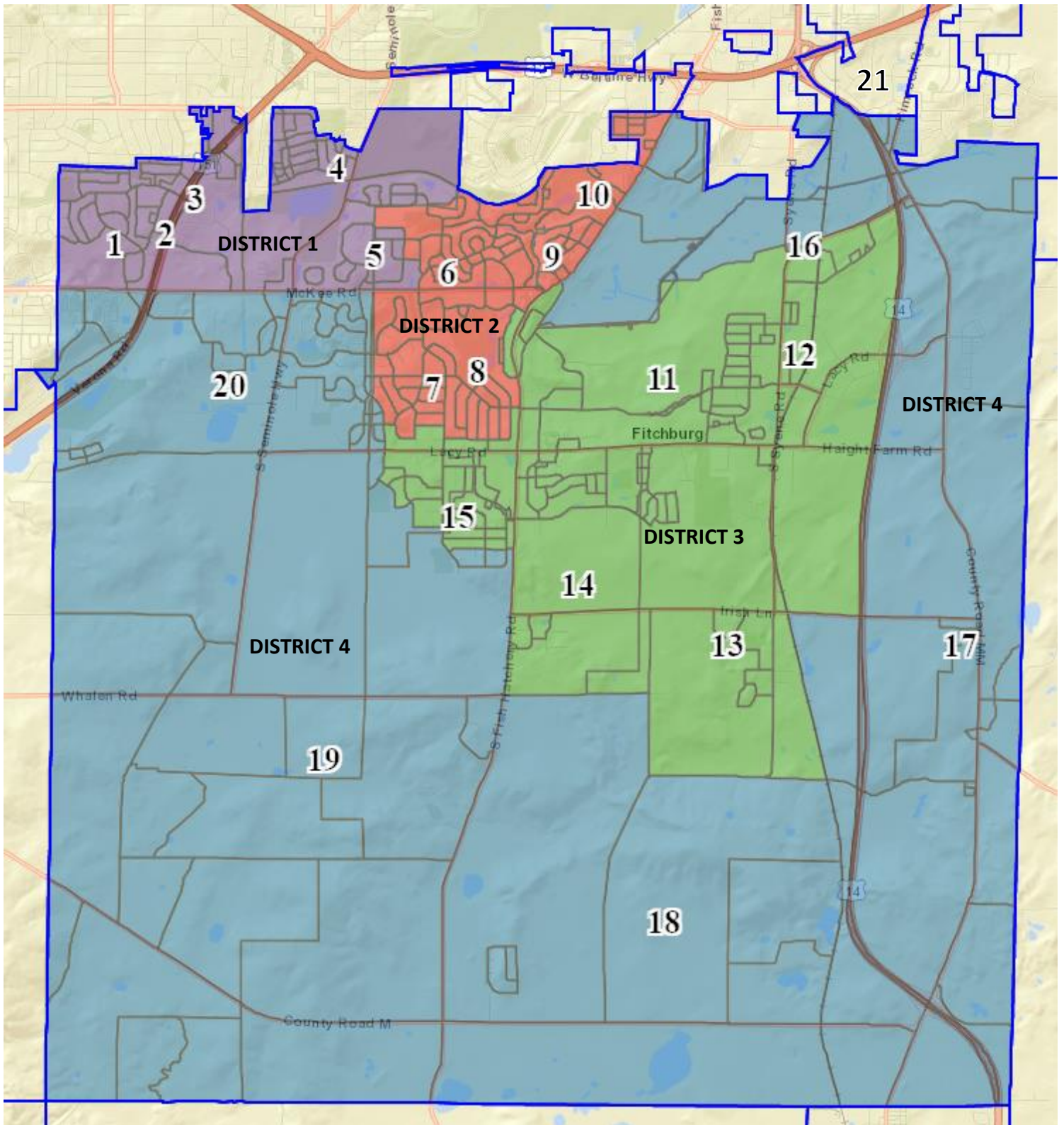
**Alder District 3: Wards 11 – 15 (7,729)**

**Alder District 4: Wards 16 – 20 + Town of Madison Ward 21 (6,371 + 1,390) = 7,761**



**\*This option is consistent with County Supervisory Districts Option A, and with County Options C and G subject to a minor change to Wards 16 and 17 as identified herein.**

Option 3 – DRAFT 10-6-2021



2020

Ward	Population	Pop 18+	White	Black	Hispanic	Asian	Am Indian	Pac Islldr	Other	Multi-Other
1	1,945	1,322	946	437	350	137	23	3	27	22
2	1,346	1,066	520	267	430	100	11	4	12	2
3	1,182	836	293	139	680	52	9	1	3	5
4	2,014	1,402	605	313	883	161	14	0	22	16
5	1,298	969	984	67	79	124	8	0	31	5
<b>District 1</b>	<b>7,785</b>	<b>5,595</b>	<b>3,348</b>	<b>1,223</b>	<b>2,422</b>	<b>574</b>	<b>65</b>	<b>8</b>	<b>95</b>	<b>50</b>
6	959	702	682	32	82	129	15	0	17	2
7	1,376	1,197	1,137	76	54	84	7	0	11	7
8	1,374	1,149	1,080	73	111	85	1	0	20	4
9	1,983	1,527	936	421	505	76	22	0	11	12
10	2,032	1,443	460	835	653	50	8	0	13	13
<b>District 2</b>	<b>7,724</b>	<b>6,018</b>	<b>4,295</b>	<b>1,437</b>	<b>1,405</b>	<b>424</b>	<b>53</b>	<b>0</b>	<b>72</b>	<b>38</b>
11	2,041	1,718	1,719	76	97	119	17	0	9	4
12	1,137	1,035	923	48	59	86	9	0	8	4
13	1,573	1,382	1,326	44	103	76	4	0	12	8
14	1,218	1,047	1,017	37	71	64	10	3	13	3
15	1,760	1,355	1,463	57	120	83	17	4	12	4
<b>District 3</b>	<b>7,729</b>	<b>6,537</b>	<b>6,448</b>	<b>262</b>	<b>450</b>	<b>428</b>	<b>57</b>	<b>7</b>	<b>54</b>	<b>23</b>
16	1,704	1,450	932	225	403	107	8	1	13	15
17	629	490	503	26	65	22	4	1	4	4
18	1,070	1,030	640	330	55	15	27	0	2	1
19	940	756	766	26	69	45	10	1	21	2
20	2,028	1,524	1,695	52	66	164	11	0	37	3
21	1,390	1,068	456	368	494	39	4	2	4	23
<b>District 4</b>	<b>7,761</b>	<b>6,318</b>	<b>4,992</b>	<b>1,027</b>	<b>1,152</b>	<b>392</b>	<b>64</b>	<b>5</b>	<b>81</b>	<b>48</b>

2010

Ward	Population	Pop 18+	White	Black	Hispanic	Asian	Am Indian	Pac Islldr	Other	Multi-Other
District 1	6,485		3,058	996	1,923	427	25	6	14	36
District 2	6,318		5,212	317	313	439	14	1	5	17
District 3	6,307		3,094	1,028	1,846	270	25	4	4	36
District 4	6,150		5,091	511	259	217	46	3	5	18