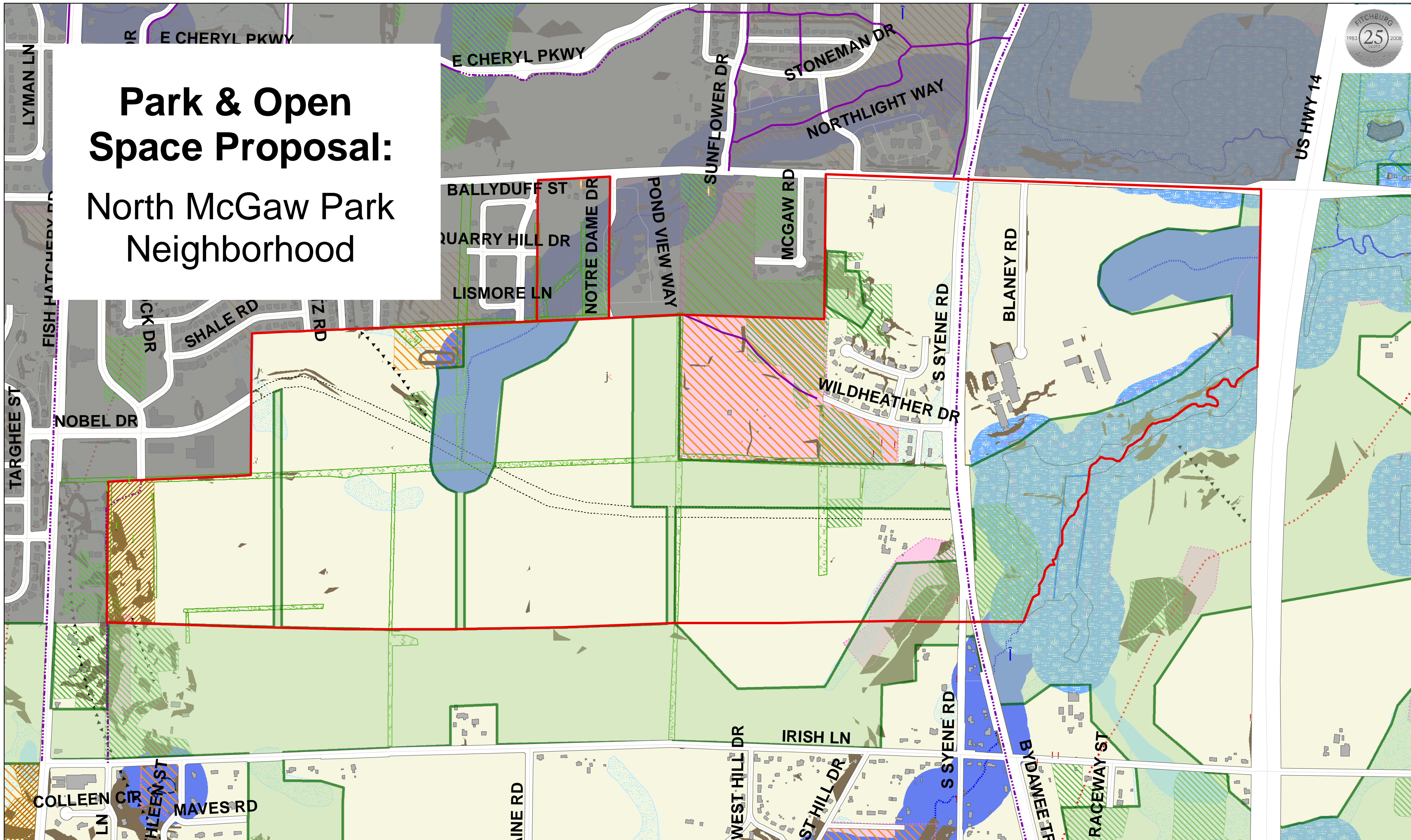


Park & Open Space Proposal: North McGaw Park Neighborhood

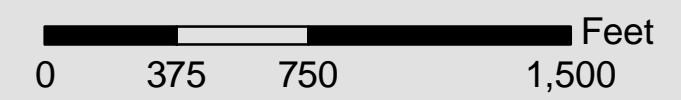


Environmental Resources

- Env. Corridor (Dane County)
- +12% Slopes
- Wetland w/ 300-ft Buffer
- Highest Nat. Infiltration
- Possible Hydric Inclusion
- Open Water
- 300-ft Water Buffer
- Water/Stream
- Public Land
- Forest
- Potential Oak Savanna Remnant
- Tree Line
- Small Moraine
- Medium Moraine
- Spring
- Heritage Oak Tree
- Potential Specimen Tree

Cultural Resources

- Indian Trail
- Indian Mounds
- Indian Camp
- Building Footprint
- Scenic Resource
- Historic Schoolhouse
- Current School
- Historic Lead Mine
- Historic Stone Quarry
- Historic Building/Site
- National Register of Historic Places
- Proposed Park & Open Space
- North McGaw Neighborhood
- Urban Fitchburg
- City Limits
- Right of Way
- Potential Road
- Existing Rec. Trail
- Proposed Rec. Trail



Data Sources:
 Scott, 1976. Alison, 2001. Fitchburg Parks Dept., 2007, 2008. Dane County LIO, 2004, 2005. WDNR, 1986, 2004. Dane County & NRCS, 2005. Warner, 1873. Brown & W.W. Hixon & Co., 1924 (WI Historical Society). Fitchburg Landmarks Preservation Commission, 1999. Madison MPO, 2006. DCRPC, 2006. Fitchburg Planning Dept., 2004, 2007. CARPC, 2006, 2008. Natural Resources Consulting, 2007. Dane County CAPD, 2006. Fitchburg Public Works, 2007. Fitchburg Citizens, 2008.