

May 29, 2007 12:17pm PLOTTED BY: P.Roth SAVED BY: P.Roth
 G:\Land\8106002\dwg\002-ces\Exist\Conditions-01.dwg Layout1
 IMAGES: G:\Land\8106002\dwg\vernal\Done_Co\In\20060601\City_Shape\outside_tifs\east.tif; G:\Land\8106002\dwg\vernal\Done_Co\In\20060601\City_Shape\outside_tifs\north.tif; RMI117LB
 REFERENCES: G:\Land\8106002\dwg\vernal\Done_Co\In\20060601\City_Shape\outside_tifs\east.tif; G:\Land\8106002\dwg\vernal\Done_Co\In\20060601\City_Shape\outside_tifs\north.tif; RMI117LB

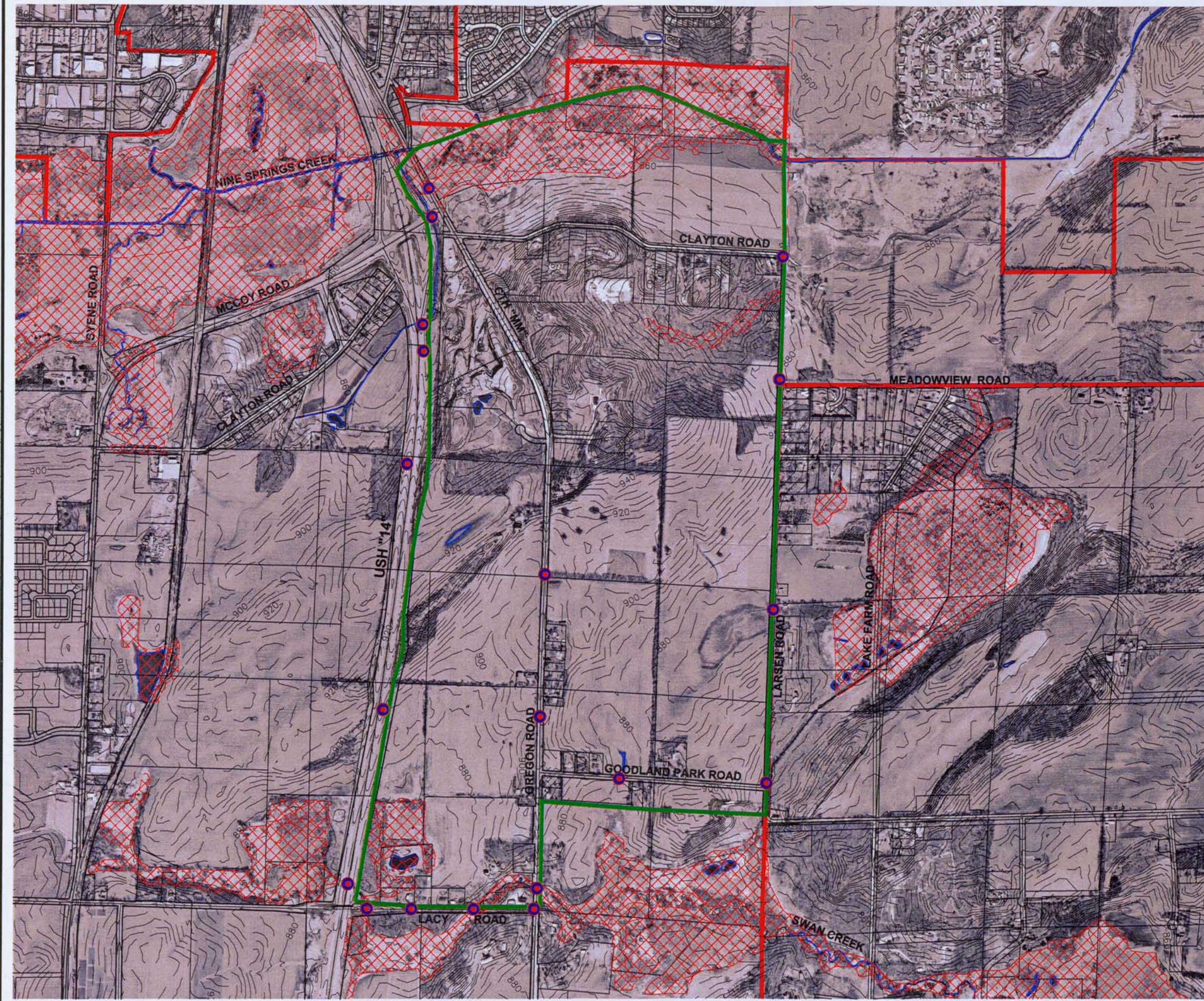






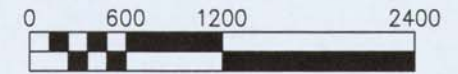


EXHIBIT 2
EXISTING CONDITIONS
NORTHEAST NEIGHBORHOOD
CONCEPTUAL STORM WATER PLAN

CITY OF FITCHBURG
DANE COUNTY, WISCONSIN

LEGEND

-  PLAN BOUNDARY
-  MUNICIPAL BOUNDARY
-  WATERWAY
-  EXISTING TOPOGRAPHY
-  WETLANDS (WISCONSIN WETLAND INVENTORY)
-  STORM SEWER OUTFALL LOCATION



DATE: MAY, 2007

© 2007 Copyright Ruekert & Mielke, Inc.

SOURCE:
 BASEMAP SOURCE: DANE COUNTY

