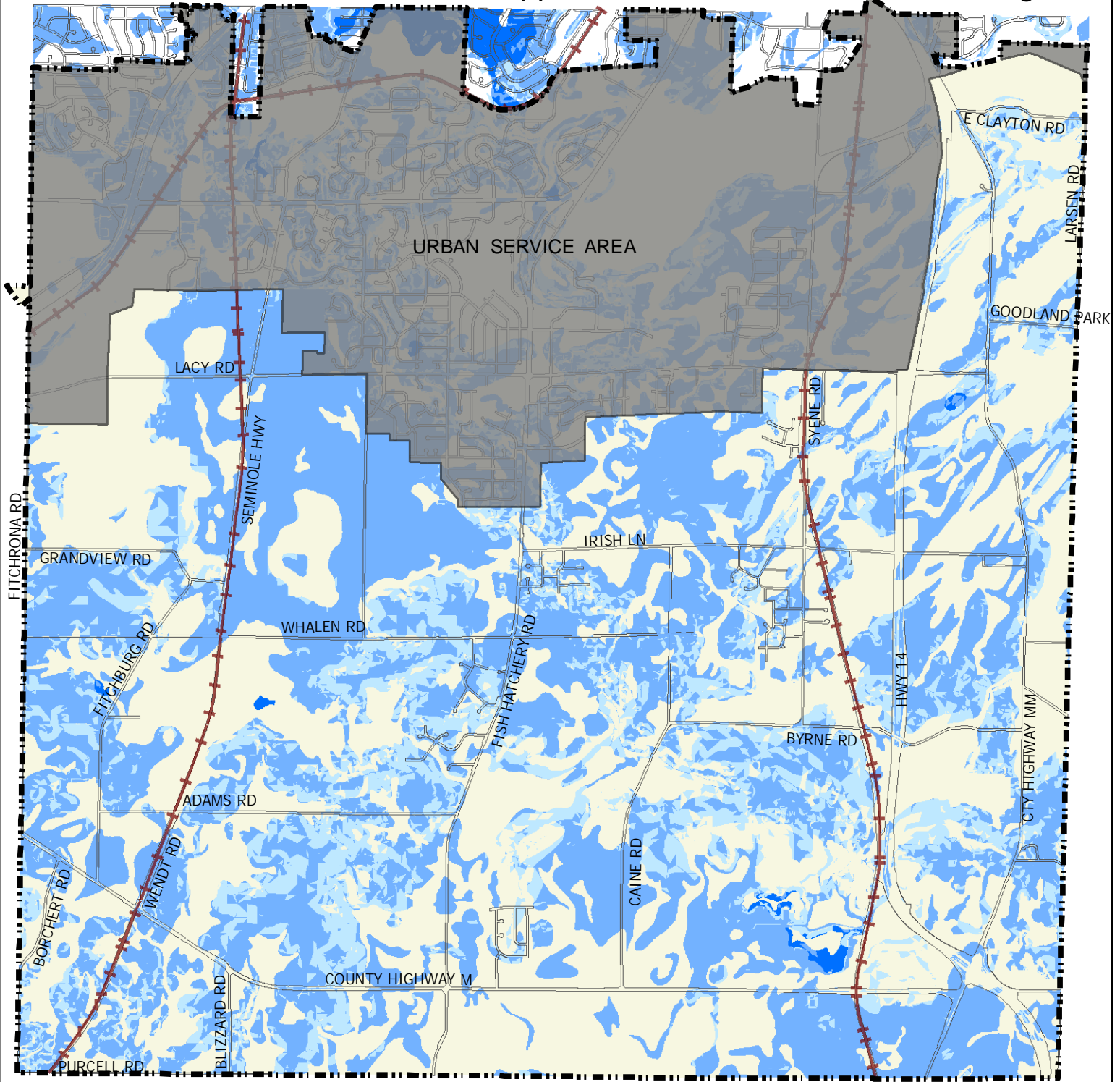


# Other Considerations: Top 25% of Natural Infiltration Opportunities for Groundwater Recharge



## Legend

### Infiltration Rating (0-10)

- 7.5
- 8
- 8.5, 9, 10

- City Limits
- Railroad Corridor
- Right of Way

0 1,250 2,500 5,000 Feet

Data Source:  
Capital Area Regional Planning  
Commission, 2006.

Map prepared by Fitchburg Parks Dept.  
February 2008